

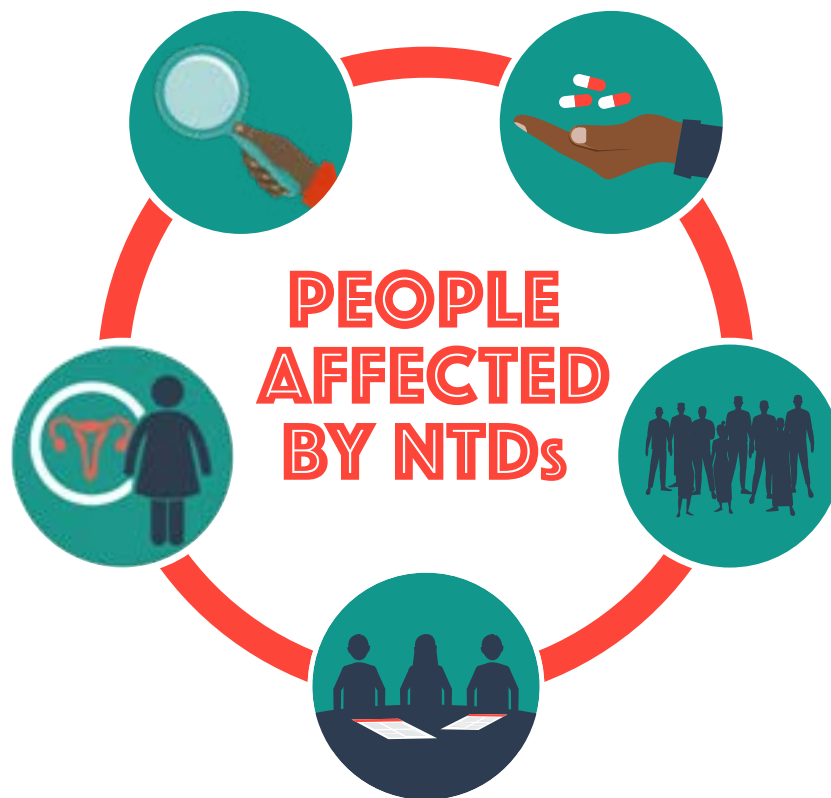
KEY IMPACTS OF THE COUNTDOWN PROGRAMME

Improved care and support services

- Understanding FGS stigma and barriers to seeking care
- **Mainstreaming gender, disability, equity and rights**
- **Gender, Equity and Rights (GER) pilot** extended to Kwara State, Nigeria
- **Increased motivation of volunteers** through additional days for training and the valuable use of role plays to increase understanding and engagement with training content:
- **Guidelines developed on MAM counselling** being translated to indigenous language for CDDs to avoid misinformation

Disease management and disability inclusion

- Collaborative design and implementation of **peer-support groups** for people affected by NTD morbidity and disability
- Establishing a **community-based support system** to improve health and wellbeing of people affected by stigmatizing skin Neglected Tropical Diseases affecting the skin in Kaduna and Kwara states
- Developing an **integrated community-based detection and referral system** for neglected tropical diseases affecting the skin: A pilot study in Kaduna and Ogun States, Nigeria



Expanded access to MDA

- A **test-and-treat strategy** developed for onchocerciasis control using WHO-endorsed macrofilaricidal treatment, doxycycline, as a potential alternative for ivermectin and suppression of local vectors with targeted insecticide
- Explored the **key barriers that prevent communities from accessing treatment** in hotspot communities in Ghana, Cameroon.
- **Increased number of Female CDDs** led to improved access
- Expanded access for the case management of FGS for women and girls in Liberia and Nigeria

Integration of services

- Development of the NTD component of the **annual operational plan for health intervention programmes, Nigeria**
- **Tool development and training** with Liberian MoH for MDA funded via ASCEND
- **Integration of female genital schistosomiasis diagnosis and treatment services** into primary care

Global health security and community mobilisation: building trust in communities

- **Improved strategies and guidance for CDDs**
- Enhanced community sensitisation and the tailored use of IEC materials
- Adaptation to NTD guidelines to include WHO COVID-19 principles

IMPACTS AT NATIONAL AND INTERNATIONAL LEVEL



CAMEROON



GHANA



LIBERIA



NIGERIA